

# NEW PHILHARMONIC

Kirk Muspratt  
Artistic Director & Conductor

2022-2023





## Welcome!

On behalf of the entire staff, I welcome you to the McAninch Arts Center. We are so happy you are here and welcome you to our MAC family and hope you feel at home. We want this to be your home to unplug and connect to an evening filled with laughter, music, dance, or theatre. We strive to inspire you through unique and inspiring theater experiences. We hope to transcend your expectations with excellent service and special pre and post-show engagement opportunities that help you connect to the artists and art forms more deeply. While you are here, don't forget to take some time to visit the Cleve Carney Museum of Art in the Lobby to experience cutting-edge contemporary art or enjoy our full-service concession area.

When you leave, please stay connected to us by joining us on Facebook (AtTheMAC) or by joining our e-newsletter to find out about added shows, events, and special offers ([www.AtTheMAC.org](http://www.AtTheMAC.org)). This year we challenge you to try something new at the MAC and expand your cultural palate. We invite you to join us for our free Global Flicks Film Series in February, to attend one of our student productions, or to join us this summer for the *Andy Warhol Portfolios: A Life in Pop* Exhibition.

We are thrilled that you have joined us, and if you should need anything during your visit, please don't hesitate to ask any of the staff, and we will do our best to accommodate you. We know you have many choices, and we are grateful you chose us. We sincerely hope you have a wonderful time and look forward to entertaining you.

Enjoy the show!

Diana Martinez  
Director, McAninch Arts Center



Dear Friends of New Philharmonic,

On behalf of my terrific colleagues, I would like to thank you for being so loyal, so supportive, so enthusiastic in every respect towards this wonderful orchestra!

I hope that this upcoming season will bring you laughter, goosebumps, tears, and a feeling of joy when you attend our performances. I mention "tears" in that *Romeo and Juliet* is replete with utter heartbreak. I mention "laughter" as we have always such a good time at the Halloween concerts, eh? And, I mention "goosebumps" as both the Hollywood Concerto performances and New Year's Eve concerts should bring tons of these.

If you enjoyed *West Side Story* last year, we hope that you will join us for *South Pacific* this season with the world famous Nathan Gunn leading our cast.

Thank you again for being the most important part of each and every of our performances.

And, I look forward to greeting each of you again after the performances at "Cookies with Kirk!"

**KIRK MUSPRATT**

Kirk Muspratt, Music Director and Conductor

----- **NEW PHILHARMONIC 2022-2023 SEASON** -----

**Tchaikovsky Piano Concerto**

Saturday, Sept. 24, 7:30 p.m.

Sunday, Sept. 25, 3 p.m.

Tchaikovsky: *Piano Concerto No. 1*

Prokofiev: *Romeo and Juliet Suites*

Victor Santiago Asuncion, piano

**Halloween Spooktakular**

Saturday, Oct. 22, 7:30 p.m.

Sunday, Oct. 23, 3 p.m.

**New Year's Eve Concert:**

Saturday, Dec. 31, 1:30, 5 & 8:30 p.m.

Mischa Bouvier, baritone

The CoverGirls Violin Show

**Korngold's Hollywood Concerto**

Saturday, Jan. 21, 7:30 p.m.

Sunday, Jan. 22, 3 p.m.

Korngold: *Violin Concerto in D Major, Op. 35*

Sibelius: *Finlandia*

Enescu: *Rumanian Rhapsody No. 1*

Esme Aria Kim, violin

**Broadway in Concert:**

***South Pacific***

Saturday, Apr. 15, 7:30 p.m.

Sunday, Apr. 16, 3 p.m.

For tickets and information,

call (630) 942-4000 or visit **AtTheMAC.org**

New Philharmonic is grateful for season support from:



The 2022-2023 Season is presented through the generosity of Bjarne R Ullsvik

New Philharmonic  
Kirk Muspratt, Music Director and Conductor  
46<sup>th</sup> Season 2022-2023

# *New Year's Eve*

**Kirk Muspratt**, Music Director and Conductor

featuring

**Mischa Bouvier**, baritone

**The CoverGirls Violin Show**

Jennifer Lowe, Emi Tanabe, Andreanna Moravec

Sponsored by



This program is partially supported by a grant  
from the Illinois Arts Council Agency.



Saturday, Dec. 31, 2022, 1:30, 5 and 8:30 p.m.  
Belushi Performance Hall

## PROGRAM

- Thunder and Lightning Polka, op. 324* ..... Johann Strauss Jr.
- Kleiner Anzeiger, Polka schnell, op. 4* ..... Joseph Hellmesberger Jr.
- Phönix-Marsch, op. 105* ..... Josef Strauss
- Radetzky March, op. 228* ..... Johann Strauss Sr.
- Anfonaf Angel* ..... Robat Arwyn  
Mischa Bouvier, baritone
- Te Busco* ..... Celia Cruz  
Mischa Bouvier, baritone
- Main Title from Chinatown* ..... Jerry Goldsmith
- Cinema Paradiso* ..... Ennio and Andrea Morricone  
arr. Angela Morley
- Love Scene from El Cid* ..... Miklós Rózsa
- This Nearly Was Mine* ..... Richard Rodgers and Oscar Hammerstein  
from *South Pacific*  
Mischa Bouvier, baritone
- Never Enough* ..... Benj Pasek and Justin Paul  
from *The Greatest Showman*  
Mischa Bouvier, baritone
- Proud Mary* ..... Ike and Tina Turner  
arr. Jeff Livorsi  
The CoverGirls
- Auld Lang Syne* ..... Traditional

*Please join us in the lobby for a champagne toast  
immediately following the performance.*

*Happy New Year  
to our Friends at*



2023

...and

Thanks to the New Philharmonic  
for a Spectacular Season!



**STG DIVORCE LAW**



WHERE CULTURE  
AND COMMUNITY  
CONNECT

*Thank  
You!*

The MAC, in partnership with the College of DuPage Foundation, thanks our generous 2022-2023 sponsors. Sponsor support helps us to keep ticket prices affordable and allows for engagement and enrichment for the entire community, making the MAC the Center where culture and community connect.



**College of DuPage  
FOUNDATION**



**Bjarne R. Ullsvik  
G. Carl Ball Family Foundation**

## GUEST ARTIST PROFILES



**Mischa Bouvier** is widely regarded as a singer of keen musicality and unique beauty of tone. Praised by *San Francisco Classical Voice* for an “immensely sympathetic, soulful voice” and “rare vocal and interpretive gifts,” and by *Opera News* for his “soothing, cavernous baritone that can soar to heights of lyric beauty,” Bouvier has continued to garner critical acclaim for a diverse performing career that includes concerts, recitals, staged works and recordings. Bouvier made his Lincoln Center debut in 2014 at Alice Tully Hall in a performance of Jocelyn Hagen’s *amass* with Musica Sacra under the direction of Kent Tritle, and his Carnegie Hall debut in 2012 at Weill Recital Hall in recital with pianist Yegor Shevtsov.

Other notable performances include Bach’s *St. Matthew Passion* (arias) with Iván Fischer and the Orchestra of St. Luke’s at Stern Auditorium at Carnegie Hall; Rodgers & Hammerstein’s *Carousel* (Jigger Craigin) with Keith Lockhart and the Boston Pops at Symphony Hall in Boston; Arvo Pärt’s *Passio* (Evangelisti) for the “collected stories” series at Zankel Hall at Carnegie Hall, curated by David Lang; Bach’s *St. Matthew Passion* (Jesus) at the Festival Casals de Puerto Rico, conducted by Helmuth Rilling; Bach’s *St. John Passion* (Pilate and arias) with the Saint Thomas Choir of Men and Boys, under the direction of John Scott; Handel’s *Messiah* at Grace Cathedral and the Mondavi Center with the American Bach Soloists, conducted by Jeffrey Thomas; Gordon Getty’s *Plump Jack* (Bardolph and Chief Justice) at the Ángela Peralta Theater in Mazatlán, Mexico; Mohammed Fairouz’s *Sumeida’s Song* (Alwan), conducted by Scott Dunn at Zankel Hall; Handel’s *Messiah* with the Orquesta Sinfónica de Puerto Rico in San Juan, under the direction of Maximiano Valdés; and Monteverdi’s *L’Orfeo* (Plutone) with Apollo’s Fire in Cleveland, Ann Arbor, Berkeley and Rohnert Park, CA.

An ardent recitalist, Bouvier has appeared in recital for the Macon Concert Series, Clemson University’s Utsey Chamber Music Series, Baldwin-Wallace Art Song Festival, Trinity Church’s Concerts at One, Rockport Chamber Music Festival, Planting Fields’ Music at the Mansion, Cold Springs Harbor Laboratory Cultural Series, Abbey Church Events at St. Martin’s University, Barbès Brooklyn, Lincoln Center at Fort Collins, Lakewood Cultural Center, SongFusion, New York Festival of Song, Five Boroughs Music Festival, Metropolis Ensemble, Close Encounters with Music, Manhattan School of Music, Soochow University (Shilin District, Taiwan), Shih Chien University (Taipei), Yongfoo Elite (Shanghai), and elsewhere. As an advocate for contemporary vocal music and song, Bouvier has offered the world premieres of Charles Fussell’s *Venture*, Mohammed Fairouz’s *Furia* (arrangement for baritone and orchestra), Bryan Page’s *The Edith Poems*, Gabriela Lena Frank’s *Las cinco lunas de Lorca*



## GUEST ARTIST PROFILES

(arrangement for tenor, baritone, and piano), Jeremy Gill's *3 Songs About Words* (arrangement for baritone, piano, and clarinet), Francine Trester's *An Oman Odyssey*; and songs by Hans Gefors, Daniel Bernard Roumain, Yotam Haber, Aaron Grad, Jonas Forssell, Richard Wilson, Ylva Skog, Daniel Temkin, and others.

As a soloist, Bouvier has appeared with many orchestras and ensembles, including the Alabama Symphony Orchestra (Handel's *Messiah*), Sacred Music in a Sacred Space (Bach's *St. Matthew Passion*), Mark Morris Dance Group ("Bedtime" and "Love Song Waltzes"), Columbus Symphony Orchestra (Brahms's *Requiem*), Chatham Baroque (Purcell's *The Fairy-Queen* and Bach's *St. John Passion*, 1725 ed.), Colorado Symphony (Handel's *Messiah*), American Handel Festival (Handel's *Hercules*), Stamford Symphony (Mozart's *Requiem*), Helicon Ensemble (Handel's *La resurrezione*), Princeton Glee Club (Fauré's *Requiem* and Vaughan Williams's *Five Mystical Songs*), Tallahassee Symphony Orchestra (Vaughan Williams's *Fantasia on Christmas Carols* and Bryan Page's *Hawthorne Christmas Suite*), Lysander Piano Trio (Beethoven folksong arrangements), Tanglewood Music Center Orchestra (Verdi's *Don Carlo*), Anonymous 4 (Einhorn's *Voices of Light*), Symphony of Northwest Arkansas (Brahms's *Requiem*), Rutgers Kirkpatrick Choir (Britten's *Cantata misericordium*), New Mexico Symphony Orchestra (Gordon Getty's *Plump Jack*), Publick Musick (Weckmann's *Wie liegt die Stadt so wüste*, Bruhn's *De Profundis Clamavi*, and Schütz's *Ich liege und schlafe*), Long Island Philharmonic (Bach's *Christ lag in Todes Banden*), Huntington Choral Society (Bach's *B Minor Mass*), Folger Consort ("Spanish Christmas"), Christopher Williams Dance ("Mumbo-jumbo"), and Sting (*Songs from the Labyrinth*).

Several of Bouvier's artistic collaborations have spanned over a decade, including those with the American Bach Soloists (ABS), TENET Vocal Artists (TENET), and Bach Collegium San Diego (BCSD). With ABS, Mischa has performed Bach's *St. Matthew Passion* (Pilate and arias); Handel's *Messiah*; Antonio Lotti's "Mass for Three Choirs;" Handel's *Acis and Galatea* (Polyphemus); Telemann's *Kanarienvogel-Kantate*; Bach's *Magnificat*; Handel's *Apollo e Dafne* (Apollo); and numerous Bach cantatas, including *Amore traditore* and "Hunting Cantata" (Pan). With TENET, Mischa has sung Schmelzer's *Le Memorie Dolorose* (Nicodemo); Bach's *St. John Passion* (Jesus and arias); Handel's *Messiah*; Buxtehude's *Membra Jesu Nostri*, *Ich habe Lust abzuschneiden*, and *Jesu meine Freude*; works by Purcell, Biber, Kerll, and Praetorius; and nine annual performances of Monteverdi's *Vespers of 1610* (various). And with BCSD, Bouvier has appeared in Bach's *St. John Passion* (Pilate and arias), Mozart's *Requiem*, Handel's *La resurrezione* (Lucifer), Handel's *Messiah*, Haydn's *Nelson Mass*, Handel's *Acis and Galatea* (Polyphemus), Stuck's *Héraclite et Démocrite* (Démocrite), Handel's *Apollo e Dafne* (Apollo), "An Empire of Silver & Gold: Music from 18th Century Latin

## GUEST ARTIST PROFILES

America,” and the world premiere of “El Mesías: Handel’s Messiah for a New World.”

In addition to his work as a soloist, Bouvier is a member of the Mirror Visions Ensemble (MVE), a vocal chamber music group based in NYC. Since joining in 2014, he has collaborated with various members of the group on programs, residencies, and masterclasses throughout the United States, Canada, and Europe. Most recently, Bouvier joined the ensemble for “This Land is Ours,” a musical exploration of America featuring newly-commissioned songs by Adolphus Hailstork, Leslie Adams, Braxton Blake, Carlos Simon, Harold Meltzer and others; “Midnight Magic,” an examination of the witching hour; and “Of Beasts and Brutes,” an investigation of animal and human behavior. Other MVE collaborations have included a week-long residency at Cal State Fullerton focusing on cabaret music; a survey of the last two centuries of Swedish art song, performed at the Église suédoise de Paris; masterclasses for students at public schools in Pennsylvania and the Bronx, and at New York University; and the premieres of new vocal works by the winners of MVE’s inaugural Young Composers Competition at the Sheen Center in NYC.

On stage, Bouvier has been seen most recently as Ko-Ko in Gilbert & Sullivan’s *The Mikado*. Other roles include Moneybags Billy in Weill’s *The Rise and Fall of the City of Mahagonny*, Malatesta in Donizetti’s *Don Pasquale*, Enrico in Haydn’s *L’isola disabitata*, Betto in Puccini’s *Gianni Schicchi*, Le médecin in Debussy’s *Pelléas et Mélisande*, Usher in Gilbert & Sullivan’s *Trial by Jury*, and Officer in Rossini’s *Il barbiere di Siviglia*.

Bouvier holds degrees from Boston University and the University of Cincinnati College-Conservatory of Music. He is an alumnus of the Lyric Opera Cleveland Young Artist Program, Internationale Meisterkurse für Musik Zürich, Carmel Bach Festival Vocal Master Class, American Bach Soloists Academy, and Tanglewood Music Center. His discography includes Johann Heinrich Schmelzer’s *Le Memorie Dolorose* (Olde Focus Records), Mohammed Fairouz’s *Sumeida’s Song* (Bridge Records), two discs of Agostino Steffani duets (Musica Omnia), and Rodgers & Hammerstein’s *Carousel* with the Boston Pops (BSO Classics).

In 2021/22, Bouvier will perform with the TENET Vocal Artists (Handel’s *Messiah* and works by Praetorius); the Mirror Visions Ensemble (“Midnight Magic” at Merkin Hall, and performances of “Of Beasts and Brutes” and “Journeys” in Toronto); Bach Collegium San Diego (the world premiere of “El Mesías: Handel’s Messiah For A New World”); the Elm City Consort (17th-century Italian songs, duets, and arias); and the American Bach Soloists (Handel’s *Belshazzar* and Bach’s *Miss a in A*).

## GUEST ARTIST PROFILES



Jennifer Lowe



Emi Tanabe



Andreanna Moravec

**The CoverGirls Violin Show** is a colorful, high-energy musical revue of the greatest pop and rock hits from Led Zeppelin to Lady Gaga, all performed on the CoverGirls' signature purple electric violins. It's our love of fun, music and fashion that draws us together to share our unique brand of entertainment. The CoverGirls are some of the Chicago area's most versatile and accomplished pop and rock professional string artists. The women of the CoverGirls Violin Show have toured and shared the stage with the legendary rock band Chicago, and have performed across the US along side musical legends Rod Stewart, Peter Gabriel, Kristin Chenoweth, Barry Manilow, Aretha Franklin, CeeLo Green, The Moody Blues, The Trans-Siberian Orchestra and have performed for Deepak Chopra and entertained three of our US Presidents. The depth of musical talent demonstrated by the performers is formidable. In addition to being classically trained, many of the CoverGirls are gifted improvisers in the hip-hop, jazz, rock and latin idioms, bringing an exciting extra element of musicianship to each and every show.

A circular logo for WDCB 90.9 FM Jazz. The logo is red and white with a black border. The text 'WDCB' is at the top, '90.9 FM' is in the center, and 'JAZZ' is at the bottom. There are two lightning bolt symbols on either side of the frequency.

**CHICAGO'S HOME FOR  
JAZZ AND BLUES**  
... and more!

[www.WDCB.org](http://www.WDCB.org)

The background of the graphic is a close-up, warm-toned photograph of a brass instrument, likely a trumpet, with bokeh light effects. On the left side, there is a vertical decorative strip with colorful, concentric circular patterns in shades of green, yellow, and red.

Save the Date!

We are participating in the 11th annual

Chicago  
**Theatre**  
**Week** Feb 16-26  
2023

\$15/\$30 tickets go on sale Tuesday, January 10:

[ChicagoTheatreWeek.com](http://ChicagoTheatreWeek.com)

#CTW23



Featuring  
Andy Warhol Portfolios: A Life in Pop  
Works from the Bank of America Collection

**BANK OF AMERICA**  
This exhibition has been loaned through the Bank of America Art in our Communities® program.

**SUMMER 2023**

Anytime Tickets On Sale Now | Timed Tickets On Sale Dec. 3

**Warhol2023.org**  
**630.942.4000**

**BANK OF AMERICA**

**Ba||.** Bjarne R Ullsvik

Cleve Carney  
Museum of Art  
 mac  
College of DuPage College of DuPage FOUNDATION

**CLAYCO**

**DuPage**  
Foundation

**Wight**



**Kirk Muspratt** (Music Director and Conductor) recently received the 2018 Conductor of the Year award from the Illinois Council of Orchestras. He was also named “Chicagoan of the Year” in classical music by John von Rhein and the staff of the *Chicago Tribune*. In honoring Muspratt, von Rhein said, “Ask the delighted adults and kids who this year flocked to his concerts in west suburban Glen Ellyn with the New Philharmonic Orchestra ... They will tell you he made concert going an interactive experience that was both enlightening and— are you ready?—fun.”

Recognized as one of the outstanding figures in the new generation of conductors, Muspratt has garnered international critical acclaim as a “born opera conductor” (*Rheinische Post*), “a knowledgeable musician who delivers superbly controlled, gorgeously shaped readings” (*St. Louis Post-Dispatch*), and “friend to local music” (*Midwest Beat Magazine*). The *Los Angeles Times* declared, “Watch him!”

In July 2004, Muspratt was named both music director of New Philharmonic and artistic director/music director of DuPage Opera Theatre (now New Philharmonic Opera). In his last 15 years, productions featured *Otello*, *Madama Butterfly*, *Le Nozze di Figaro*, *Il Barbiere di Siviglia*, *Hansel and Gretel*, *La Boheme*, *Faust*, *Tosca*, *The Beggars Opera*, *Elixir of Love*, *Turandot*, *Gianni Schicchi*, *Così fan Tutte*, *The Mikado*, *La Traviata* and *Die Fledermaus*.

In 2017 and 2009, New Philharmonic was awarded Professional Orchestra of the Year by the Illinois Council of Orchestras.

In his first months at New Philharmonic, Muspratt instituted a Side-by-Side program for local high school students. Six years ago, Muspratt initiated a popular Solo Competition for Children that results in a child performing at every New Philharmonic concert. In order to involve the community to the maximum, Muspratt has created “Just Ask Kirk™” cards for audience members’ questions and a “Kirkature™” cartoon to help advocate the credo: “Classical music is for everyone.”

Muspratt begins his 21st acclaimed season as music director of the Northwest Indiana Symphony Orchestra (NISO). In 2006, with NISO, he initiated the South Shore Summer Music Festival.

From 1991 through 1996, Muspratt served as resident conductor to Lorin Maazel at the Pittsburgh Symphony Orchestra. Prior to that, he was appointed as associate conductor to Joseph Silverstein at the Utah Symphony Orchestra (1990-1992). From 1987 through 1990, Muspratt served as assistant conductor to Leonard Slatkin at the St. Louis Symphony Orchestra as well as music director of the St. Louis Symphony Youth Orchestra. He was music director of

## NEW PHILHARMONIC PROFILES

the Alberta Ballet from 1997 through 1999. At the New York Philharmonic, Muspratt has served as a cover conductor. During the 2018 and 2019 season Muspratt served as a guest conductor at the Joffrey Ballet.

In addition to his work in Pittsburgh, Utah and St. Louis, Muspratt has guest conducted the orchestras of Los Angeles, Montreal, London, Korean Broadcast Symphony, Detroit, Rochester, National Arts Center, Vancouver, Knoxville, Puerto Rico, Rhode Island, Winnipeg, Calgary, Edmonton, Hamilton, Victoria, Thunder Bay, New Orleans, Stamford, Binghamton, Lafayette, South Bend, Puchon, Annapolis, Wisconsin Chamber Orchestra and Baltimore Chamber Symphony. Summer debuts have included the Tanglewood, Chautauqua and Sewanee Music Festivals and the Banff Center for Performing Arts.

In Europe, Muspratt was assistant conductor in the opera houses of Monchengladbach/ Krefeld, Germany, from 1985 to 1987. His American opera-conducting debut came with the Utah Opera in 1991. He returned there to premiere Mascagni's *L'Amico Fritz*. Maestro Muspratt has conducted *Die Fledermaus* for the Calgary Opera, *Faust* and *Merry Widow* for the Utah Opera, *Of Mice and Men* and *Il Barbiere di Siviglia* for the Arizona Opera, all to stunning critical acclaim. In addition, he debuted at the Ash Lawn-Highland Summer Opera Festival in Virginia. He returned to Arizona Opera to conduct their production of *Dialogues of the Carmelites*, to the Utah Opera for their new production of *Faust* and *Amahl and the Night Visitors* at Opera Illinois.

In 1983 and 1984, Muspratt was invited to be a scholarship student at the Chautauqua Institute and in 1986 was selected as a conducting fellow at the Aspen Music Festival. A year later, he was invited into the Conducting Program at the Tanglewood Festival. In 1988, he was chosen to be one of three conducting fellows for the Los Angeles Philharmonic Institute at the Hollywood Bowl.

As a teacher, Muspratt has taught at the Conductors' Institute of the University of South Carolina, the Conductors' Guild National Workshops, Association of Canadian Orchestras National Conference in Toronto, the Conductors' Studio at Illinois State University and at Westminster Choir College in Princeton. During the summer, he has often taught a graduate conducting class at VanderCook College of Music and for the last three summers has been teaching at the Northwestern University Summer Opera Seminar. In 2019, he taught graduate conducting master classes at Illinois State University and judged the concerto competition at Northwestern University.

Having always enjoyed working with young people, he has conducted the Pennsylvania Regional Orchestra and the Pennsylvania All-State Orchestra and most recently the IMEA District 9 orchestra. Muspratt has conducted the Boston University Tanglewood Orchestra at the Tanglewood Festival. Muspratt

has been the recipient of numerous awards, among them grants from the Canada Council and the Presser Foundation. In 1983 and again in 1984, he was winner of the Strauss Conducting Prize while a conducting student at the Vienna Conservatory. During his tenure in Utah, he received the first Utah Up 'n Comers Award ever given to a classical musician. This honor was awarded to Muspratt for his work and involvement in the Utah Arts Community. In 1987, he was named winner of the prestigious Exxon/Affiliate Artists Award.

He began his studies as a pianist in New York with Harold Zabrack and continued his studies at Temple University with Adele Marcus and Alexander Fiorillo. After completing graduate studies, Muspratt was accepted into the conducting program at the Konservatorium in Vienna, Austria.

Muspratt is a native of Crows Nest Pass, Alberta, Canada. He became an American citizen in the summer of 2010.

In 2016, he was honored to become a Paul Harris Fellow, an award named for the Rotary International Founder, Paul Harris.



**Benjamin Nadel** (Associate Conductor and Principal Librarian) is a classically trained conductor, pianist, and violinist. Based in Chicago, he is the Associate Conductor and Orchestra Librarian for the New Philharmonic and Northwest Indiana Symphony Orchestra. Nadel has been the Orchestra Director at North Central College since 2017 and beginning this fall he is the new conductor for the Northwest Indiana Symphony Youth Orchestra. Since he

began these positions, Nadel has conducted on a wide variety of programs and has prepared hundreds of pieces across both the classical and pops repertoires.

Nadel began his conducting studies with Dr. Glenn Block at Illinois State University while completing his undergraduate degree in Music Education. He then went on to receive his MA in Orchestral Conducting at the University of Iowa with Dr. William LaRue Jones. While pursuing his degrees, he had the opportunity both assist and conduct several operatic productions, including *Candide*, *La bohème*, *La clemenza di Tito*, and *Iolanthe*. He also participated in several summer music festivals, one of which was Cincinnati Conservatory's program as a part of the summer music festival in Spoleto, Italy.

From 2011 – 2015 Nadel spent his summers with the Midwest Institute of Opera, where he was assistant conductor to Maestro Joshua Greene of the Metropolitan Opera. While there, he had the occasion to conduct both full concert and stage productions of *Don Giovanni*, *Così fan tutte*, and *Carmen*. He also assisted and coached for productions of *Die Zauberflöte* and *La Cenerentola*.

Aside from his work as a professional conductor, Nadel also has a very strong connection and personal interest in music education. He believes that one of the most important aspects of being an artist is to pass along that experience and knowledge to the next generation of musicians. To that end, Nadel has worked with several high school ensembles in the Chicago area, including New Trier, Metea Valley, Glenbard West, and Stevenson High School. He has led some of these groups in side by side concerts with the New Philharmonic. He has also run conducting workshops for the Opus Chamber Music camp, as well as Illinois State University.




## MAKE MUSIC WHERE MUSIC THRIVES

College of DuPage brings 50 years of training and supporting musicians like you in whatever it is you want to do. With a staff of 25 private music instructors, nine ensembles, and four degree and certificate programs, COD is the first choice of serious musicians from the western suburbs and beyond.

### For more information

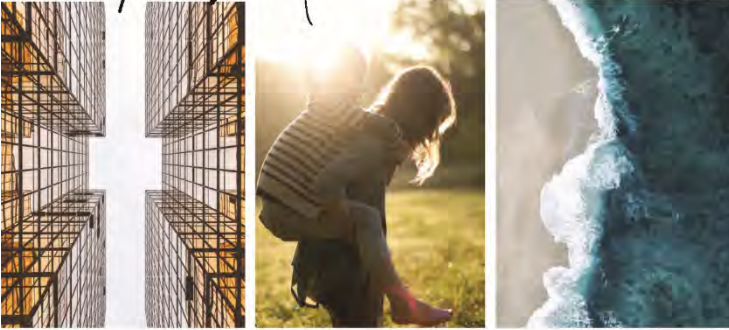
Contact Thomas Stark at (630) 942-2391 or [starkt1620@cod.edu](mailto:starkt1620@cod.edu).

For ADA accommodations, please email [access@cod.edu](mailto:access@cod.edu) with the event title in the subject line and your accommodation request. Please email two weeks in advance.

 **College of DuPage**



*A better view...*



**Let's sit down.  
We want to hear your story.**

For anyone who is experiencing life's transitions involving divorce, paternity, adoption, and more, a seat at our table means your specific needs will be addressed with our extensive access to experts, therapists, wealth managers, accountants, and our own dedicated lawyers. You will be heard, informed, guided, and protected. We combine years of experience, deep knowledge, and a team of passionate advocates to get you to a better place. We're not just a team of lawyers. We're lawyers on your team.

The MAC offers all of this for you,  
but we can't do it without you!



**YOUR GIFT HELPS PROVIDE CULTURAL VITALITY  
THAT ENRICHES AND ENTERTAINS!**



**GIVE TODAY! TO SUPPORT THE MAC,**  
visit us at [foundation.cod.edu](http://foundation.cod.edu) or call (630) 942-3088



**College of DuPage  
FOUNDATION**

(630) 942-3088 | [foundation@codfound.org](mailto:foundation@codfound.org) | [foundation.cod.edu](http://foundation.cod.edu)

## NEW PHILHARMONIC PERSONNEL

### Kirk Muspratt, Music Director and Conductor

*Chair sponsored by Renee Giragos, in memory of Dr. Henry G. Giragos and Jeanette N. Giragos and by Bob and Joan Olach*

#### 1st Violin

Michele Lekas,  
Concertmaster  
*Chair sponsored by  
Sue and Dick Lamb*  
Whun Kim  
Stephane Collopy  
Pamela Lutter  
Eloise Meloni  
James Sanders  
Tamara Glassburg  
Matthew Cataldi  
Michelle Wynton  
Danielle Wetle

#### 2nd Violin

Kristen LeJeune, Principal  
*Chair sponsored by Dr. Donald  
E. Newsom, in memory of  
Dr. Mary Ellen Newsom*  
Chikako Miyata  
Grace Yang  
Bill Kronenberg  
Melissa Streidl  
Rebecca Cambio  
Kris Semanic

#### Viola

Ryan Rump, Principal  
*Chair sponsored by  
Karen Dickelman*  
Emma Strohbush  
Jennifer Silk  
Istvan Loga  
David Beytas  
Denise Connolly  
Karen Dickelman

#### Cello

Dorothy Deen, Principal  
*Chair sponsored by John  
Rutledge and Betty Joseph*  
Wei Lu Denton  
*Chair sponsored by John  
Rutledge and Betty Joseph*  
Richard Yeo  
*Chair sponsored by John  
Rutledge and Betty Joseph*

Nancy Moore  
Anne Monson  
Nelly Rocha  
Amali Premawardhana  
David Bednarek

#### Bass

Michael Meehan, Principal  
*Chair sponsored by Margaret  
and Michael McCoy*  
Julian Romane  
John Rosenkrans  
Phillip Serna

#### Flute

Carolyn May, Principal  
*Chair sponsored by  
Kathleen Yosko*  
Maria Schwartz

#### Oboe

Andrew Lietza, Principal  
*Chair sponsored by  
Sue and Dick Lamb*  
Melinda Getz

#### Clarinet

Barbara Drapcho, Principal  
*Chair sponsored by Lowell  
and Barbra Anderson*  
Trevor O'Riordan

#### Bassoon

Dianne Ryan, Principal  
*Chair sponsored by  
Barbara Murphy*  
Lynette Pralle

#### Horn

Phil Stanley, Principal  
*Chair sponsored by  
Dr. Donald G. Westlake*  
Thomas Vienna  
Mary Jo Neher  
Ingrid Mullane

#### Trumpet

William Denton, Principal  
*Chair sponsored by Margaret  
and Michael McCoy*  
Ryan Hobbs  
Paul Semanic

#### Trombone

Tom Stark, Principal  
Adam Moen  
Darren Castellanos

#### Tuba

Riley Lindsey

#### Timpani

James Bond-Harris

#### Percussion

Andrew Cierny, Principal  
*Chair sponsored by Jim  
and Tally Knippen*  
Kent Barnhart  
Jeff Handley

#### Harp

Nichole Young

#### Keyboard

Patricia Lee

#### Orchestra Manager

Paula Cebula

#### Associate Conductor, Librarian

Benjamin Nadel  
*Chair sponsored by Richard  
and Sheila Komarek*

#### Personnel Manager

Karen Dickelman

# Thank You!



2022-2023

## THANK YOU NEW PHILHARMONIC CHAIR SPONSORS

*Lowell and Barbara Anderson*

*Karen L. Dickelman*

*Renee Giragos, in memory of Dr. Henry G. Giragos and Jeanette N. Giragos*

*Jim and Tally Knippen*

*Richard and Sheila Komarek*

*Sue and Dick Lamb*

*Margaret and Michael McCoy*

*Barbara Murphy*

*Dr. Donald E. Newsom, in memory of Dr. Mary Ellen Newsom*

*Bob and Joan Olach*

*John Rutledge and Betty Joseph*

*Dr. Donald G. Westlake*

*Kathleen Yosko*

### WHAT IS A CHAIR SPONSORSHIP?

Chair sponsorship deepens the connection to the orchestra by directing support to a specific instrument or position in the orchestra, thereby establishing a relationship between musicians and donors.



**For information or to make a gift:** (630) 942-2466 or [foundation@codfound.org](mailto:foundation@codfound.org)



## 2022-23 DINING PARTNERS

WHERE  
CULTURE AND  
COMMUNITY  
CONNECT



The MAC is thrilled to be partnering with neighborhood restaurants in our area. For your pre-show meals or post-show bites, these establishments provide MAC patrons with exclusive discounts and offers. Must present coupon and MAC ticket at restaurant prior to ordering. Valid only on day/night of MAC event.



535 W. Liberty Dr, Wheaton, IL 60187  
(630) 784-8015



1250 Roosevelt Rd, Glen Ellyn, IL 60137  
(630) 613-1250



401 Town Square, Wheaton, IL 60189  
(630) 480-7347



499 N Main St, Glen Ellyn, IL 60137  
(630) 474-0969



419 N Main St, Glen Ellyn, IL 60137  
(630) 547-2180



AT THE VILLAGE LINKS

485 Winchell Way, Glen Ellyn, IL 60137  
(630) 469-5550

### *Santa Fe* **Mexican Restaurant**

426 N Main St, Glen Ellyn, IL 60137  
(630) 790-3311

# Arts DuPage

A DuPage Foundation Initiative



artsdupage.org



facebook/ArtsDuPage



@ArtsDuPage



**#Art  
Happens  
Here**



DuPage  
Foundation **DF**<sup>®</sup>  
Doing a world of good in our own backyard<sup>®</sup>

dupagefoundation.org | 630.665.5556

# Friends of the MAC

The Friends of the MAC is a family of those who have decided that a world-class performing and visual arts center should reside in their community. Ticket sales provide only 42 percent of our \$4 million operating budget. It is through the support of College of DuPage and through the generous gifts from patrons and local businesses that we can keep art in our museum and on our stages.

## Your Gift to the MAC

- Brings nationally and internationally renowned artists to our community
- Supports our SchoolStage program that annually offers affordable arts experiences to thousands of schoolchildren
- Provides students and community members the opportunity to interact with artists
- Enhances quality of life in our community

Without the generous support of the Friends of the MAC, we would not be the beacon for the arts in DuPage County. We gratefully thank our friends, and we invite others to join them.

## Arts Center and MAC-tastic Treat Seats Endowments

Donor may choose to direct gifts to the Arts Center Endowment or the MAC-tastic Treat Seats – Tickets for Kids & Families Endowment. Donations made to these MAC Endowments, our “savings accounts,” go into principal secured, invested accounts that will provide ongoing support for arts programs and arts accessibility for years to come.

The McAninch Arts Center and the College of DuPage Foundation can also provide you with information on planned giving options, gifts of stock, IRA Charitable Rollovers and other giving opportunities.

**For complete details, visit the MAC Box Office or contact the College of DuPage Foundation at (630) 942-2462 or [foundation@codfound.org](mailto:foundation@codfound.org).**

**College of DuPage**  
**FOUNDATION** 

## FRIENDS OF THE MAC

McAninch Arts Center acknowledges and gives grateful thanks to those donors who have contributed in support of the MAC mission and vision. This list of donors reflects contributions made from Dec. 1, 2020 – Aug. 31 2022. While we carefully prepared this list, we recognize that errors may have occurred. Please accept our apology if you are not properly represented on this list and contact the College of DuPage Foundation at (630) 942-2462 so we may correct our records.

### Leadership Circle (\$5,000 and up)

Anonymous (4)  
American International Group  
Lowell and Barbara Anderson  
The John A. Attard Family  
Foundation  
Anna Ball  
Bank of America  
Dr. and Mrs. Brian W. Caputo  
Mrs. Clark G. Carpenter  
Dr. and Ms. Mark A. Curtis-  
Chavez  
Anita Dickson  
DuPage Foundation  
Follett Higher Education  
Group  
Mr. David J. Frank  
Debbie Fulks  
G. Carl Ball Family Foundation  
Goya Foods, Inc  
JCS Fund of DuPage  
Foundation  
Karen and Gene Kuhn  
La Tequileria, Inc.  
Mr. and Mrs. Richard Lamb  
and Susan and Richard  
Lamb Charitable Fund of  
The DuPage Foundation  
Mr. Larry C. Larson\*  
Legat Architects, Inc.  
Marilyn H. Wolff Foundation  
David and Carolyn May  
Dr. and Mrs. Harold D.  
McAninch  
Margaret and Michael McCoy  
Jane E. Moore  
Ms. Kimberly G. Morris  
Joan Morrissey  
Drs. Donald E. and Mary  
Ellen Newsom  
Joan and Bob Olach  
Mr. Doug Peterson  
Mr. and Mrs. Mark A. Peterson  
Meri Phillips  
Gary and Mary Rash  
John Rutledge and Betty  
Joseph  
Charles Schlau  
Mr. and Mrs. Steven E. Shebik  
STG Divorce Law  
Terrence J. Taylor and  
Maureen Sullivan Taylor  
Bjarne R. Ullsvik  
VALIC

James and Patricia Vary  
Dr. Donald G. Westlake  
Wight & Company  
Mark Wight and Eszter  
Borvendeg  
Ms. Kathleen C. Yosko

### Encore Circle (\$2,500–\$4,999)

Anonymous (2)  
Mr. and Mrs. Mark F. Baggio  
Joseph and Betsy Ballek  
Brookdale Glen Ellyn Senior  
Living Community  
Dr. and Mrs. Christopher B.  
Burke  
John and Pamela Dalby  
Enertherm Corporation/Russ  
and Judy Flores  
Representative Terra Costa  
Howard and Nick Howard  
Mr. and Mrs. James H.  
Knippen, II  
Mr. and Mrs. Gary Lietz  
Ms. Diana L. Martinez  
Representative Deanne M.  
Mazzochi  
Judith May O'Dell  
Dorothy I. O'Reilly  
Dr. and Mrs. Craig Pieters  
Mr. and Mrs. William E.  
Podgorski  
Kelly and Roland Raffel, in  
memory of Herbert K. Raffel  
Mr. Paul Rom  
Judy Ronaldson  
Rotary Club of Glen Ellyn  
Mr. and Mrs. Frank  
Shoemaker  
Geraldine Smrcina  
Marilyn Smrcina  
Angel and Troy Traub  
Mr. and Mrs. Michael R. Webb  
Wheaton Noon Rotary  
Bonnie M. Wheaton

### Director's Circle (\$1,000–\$2,999)

Anonymous (4)  
Robert and Lynne Anderson  
and Robert and Lynne  
Anderson Charitable Fund  
of US Charitable Gift Trust  
Ms. Charlotte Babitzke  
Katherine Balek

Milt and Heide Bentley  
Mr. and Mrs. James Blaha  
Prof. and Mrs. Charles E. Boone  
Ronald and Hope Bucher  
Connie Canaday Howard and  
Rex Howard  
Capt. Bernardo Iorgulescu  
USMC Memorial Fund  
DuPage Fdn  
Chicago Westmont Tesla  
Community Foundation of Will  
County  
Janet Derber  
James and Marie Drasal and  
Drasal Family Fund of  
Fidelity Charitable Gift Fund  
Mr. Ryan M. Ellison  
Anonymous Design, Inc.  
Marcela Fanning  
John and Joann Faulhaber  
Ms. Renee J. Giragos  
Mr. and Mrs. Robert G. Hartman  
Mr. and Mrs. John A. Herndon  
Lance Hering  
Mr. Mark J. Hill  
Mr. Glenn Hopkins  
Humernansky Family  
Foundation  
Jorge and Beatriz Iorgulescu  
Mr. and Mrs. James E. Jenkins  
Jeffrey Jens and Ann Boisclair  
Mr. and Mrs. Walter J. Johnson  
Mr. and Mrs. James Klang  
Richard and Sheila Komarek  
Charlene Kornoski-Du Vall  
Mr. William Kronenberg  
Linda Lauterbach  
Ida Lee  
Ms. Mary Locher  
Ms. Jennifer Mackey  
Marilyn and Tipton McCawley, Jr.  
John and Lynette McCortney  
Mr. and Mrs. Todd Menenberg  
and Todd and Mimi  
Menenberg Charitable Fund  
LTC and Mrs. James  
Milobowski  
Bill and Nancy Moore  
Mr. and Mrs. Ray Mulacek  
John Mulherin  
Ms. Emi Murata  
Mr. and Mrs. Larry G. Murdock  
Ms. Barbara Murphy  
Kirk Muspratt, in memory of  
Henry and Jeanette Giragos



## FRIENDS OF THE MAC

Nicor Gas  
 Jane Oldfield  
 Mr. and Mrs. Robert D. Owen  
 Helen Pachay  
 Madeleine Pachay  
 Mr. and Mrs. Anthony G. Padgett  
 Jim and Lorraine Paulissen  
 Ms. Linda A. Picchiottino  
 Jeffrey and Debora Ponko  
 Mr. and Mrs. Paul P. Pyrcik, Jr.  
 Richard and Elizabeth Quaintance  
 Ginny and Don Raths  
 Al and Cecile Robinson  
 The Rev. Dr. Curtis and Leanne Rolfe  
 Jordan Ross  
 Rotary International District 6440  
 Rotary International District 6450, Inc  
 Ms. Theresa M. Sak  
 Ms. Lisa Savagnago and Mr. Ronald A. Johnson  
 Mr. John Schofield  
 Mr. and Mrs. Kenneth Serwinski and the Kenneth and Nancy Serwinski Charitable Fund - Schwab Charitable  
 Kristin and Peter Shulman  
 Skeet and Laura Skeet  
 Mr. and Mrs. D. G. Stephenson, Jr.  
 Anthony and Mona Taylor  
 Judith S. Thuer  
 Mr. and Mrs. Avram Tucker  
 USG Foundation  
 Theodore M. Utchen  
 Dr. and Mrs. E. Jay Van Cura and The E Jay Van Cura MD Charitable Fund of the Vanguard Charitable Endowment Program  
 Vistex, Inc  
 Scott and Kristen Wiersum  
 Rich and Kathy Wilders  
 Jo Anne Zipperer

### **Ambassador Circle (\$500-\$999)**

Anonymous (2)  
 Tony Achilles  
 Ms. Bonniejean Alford  
 Col. and Mrs. Renato P. Bacci, Jr.  
 Ms. Susannah Ball  
 Jack and Mary Ellen Barry  
 Gayle and Don Bartell  
 Ms. Eunice Becker  
 Mr. Geoffrey Bevington  
 Mr. and Mrs. Collin M. Biggs

William Bulger  
 Ed and Kay Burton  
 Peach and Wayne Carr  
 Mr. Robert B. Chasteen  
 Greg and Janet Chejfec  
 Chocolaterie Stam of Glen Elynn  
 Megan and Peter Clifford  
 Delta Airlines  
 Dempsey-Musker  
 Barbara DiGuido  
 Robert and Carol Drake, Jr.  
 William and Kathleen Drennan  
 William and Sally Newton  
 Fairbank  
 Ms. Marla Felsten  
 Mr. Anthony Fitzpatrick  
 Mr. and Mrs. Jose G. Flores  
 Ms. Karen Gustafson  
 Ginni and Chris  
 Gwen and Chet Henry  
 Ms. Judith Hunnicutt  
 Dr. Beth Johnson  
 Christine Kickels  
 Ms. Julie Knudson and Mr. Paul Nielson  
 Ms. Kathy Leimbach  
 Mr. and Mrs. Edward Maskauskas  
 Barb and Scott Marquardt  
 Mr. Henry A. Matthews  
 Mr. Donald E. McGowan and Ms. Mary L. Prazak  
 Mr. Glenn McMurray  
 Mr. and Mrs. John Meier  
 Mr. and Mrs. Philip Norton  
 Karen Webb Owen  
 Parkers' Restaurant and Bar  
 Mr. and Mrs. Mark Pfefferman  
 PGA Tour Superstore  
 Pica-do-yo, LLC  
 Ms. Diane G. Rath  
 Ms. Amy Ripepi  
 Ms. Celia E. Rodee  
 Sylvia Rodee  
 Rotary Club of Carol Stream (Club 3112)  
 Ms. Lisa Sallwasser  
 The Shimp Family  
 Ms. Donna Jean Simon  
 Mrs. Marilyn A. Steenwyk  
 Mr. and Mrs. Anthony J. Wdowiarz  
 Ms. Kathy A. Wessel  
 Wheaton Rotary A.M. Club  
 Mr. and Mrs. Robert E. Wulffen

### **Performer (\$250-\$499)**

Anonymous (13)  
 Young Ahn  
 Terri Allen

Mr. and Mrs. Brandon Anderson  
 Mr. and Mrs. Tom Anderson  
 Mrs. Lynnette Arendt  
 Barbara and Paul Aronson  
 Vickie Austin  
 Harold and Karen Bauer  
 Mr. and Mrs. Ronald N. Ben  
 Mrs. Deborah F. Borge  
 Jim and Sandy Boves  
 Mr. Franklin E. Bowes  
 Lesley Brown  
 Cabernet & Company  
 Gayatri Choudhary  
 Ms. Linda Clark  
 College of DuPage  
 Foundation  
 Ms. Jenny Croitoru  
 Mr. James M. Cronin  
 Sharon D'Alessandro  
 Ms. Sara De Zara  
 George W. and Ann Dervis  
 Joy and Ron Detmer  
 Senator and Mrs. Kirk Dillard  
 Ms. Mary A. Donlon  
 Evalee Dumas  
 Joanne East  
 Carol and David Eisinger  
 Joseph and Frances Eraci  
 Ms. Brenda Eriksen  
 Christine and Craig Fenne  
 David and Janet Fox  
 Kenneth D. Frank  
 Marcia and Lorne Frank  
 Mr. and Mrs. Tim Franzen  
 David Fraser  
 Ms. Marilyn Fredrickson  
 Ms. Rebecca Garcia  
 Ms. Margaret R. Glenzinski  
 Ms. Joann Gras  
 Ms. Adrianna Gregory  
 Mr. Bruce Guzman  
 Catherine and Art Hall  
 Greg and Alexandra Hart  
 Brad and Victoria Hauserman  
 Jean M. Hawkinson  
 Mr. and Mrs. John D. Hlotke  
 Judy A. Hoskins  
 Mr. and Mrs. Frank C. Hudetz  
 Stephanie Iglehart  
 Mr. Bob Jackula  
 Janet and John Judd  
 Mr. and Mrs. Paul W. Junkroski  
 Ms. Barbara Kamm  
 Karl and Lee Ann Karnatz  
 Virginia and Charles Klingsporn  
 John P. and Catherine M. Kos  
 Michael F. Kozlowski  
 Gregory and Kristine Larsen  
 Ms. Bernadette Laszewski  
 and Mr. John Fossen

## FRIENDS OF THE MAC

Mrs. and Mr. Cindy Lattimer  
 Massimo Letizia  
 Ms. Alixe Lischett  
 Mrs. Hsiu Susan Logan  
 Mr. and Mrs. Ross Manire  
 Marinella's Ristorante Italiano  
 Mr. and Mrs. Daniel E. Marsh  
 Mr. and Mrs. Rick Massa  
 Mr. and Mrs. William E.  
 Matte, Jr.  
 McAninch Art Center at  
 College of DuPage  
 Ellen and Daniel McGowan  
 Florine McKay  
 Ms. Beatriz Mendoza  
 Nina and Mark Menis  
 Dr. and Mrs. John Messitt  
 Mr. and Mrs. Kenneth  
 Metcalfe  
 Monarch Landing  
 Mr. and Mrs. Darren Morrison  
 Mr. and Mrs. David W.  
 Morton  
 Ms. and Mr. Jane Mrofka  
 Barbara and Ted Nagengast  
 Mr. and Mrs. John Nassos  
 Ms. Kerry O'Brien and Mr.  
 Doug King  
 Mr. Dan O'Connor  
 Ms. and Mr. Adriana Ohl  
 Zamora  
 Olive 'N Vinnie's Oil and  
 Balsamic Bar  
 Ms. Debra Ombrello  
 Gayle Orlando  
 Ms. Vivian Palicki  
 Mr. Jim Peterson  
 Mr. and Mrs. Kenneth  
 Peterson  
 John J. and Mary A. Plunkett  
 Press Photography Network  
 Brian and Ambika Reid  
 Ms. Patricia Read  
 Barb and Kell Reimann  
 Richard J. and Linda J.  
 Sieracki Foundation  
 Ms. Rene' M. Richards  
 Mr. and Mrs. Kirk T. Roberts  
 Ms. Yolanda E. Rocio  
 Rotary Club of Bloomingdale-  
 Roselle  
 Janey Sarther  
 Mr. Larry Schouten  
 Jerry and Susan Schurmeier  
 Dr. Thomas R. Scott  
 Mr. Gerald Sendra  
 Mr. and Ms. Andrew Smith  
 and the Andrew and Maria  
 Smith Charitable Fund -  
 Fidelity Charitable  
 Mr. Vince Sparrow  
 Chris Steinys

Lisa and Ted Stevens  
 Suzan and Glenn Stith  
 Ms. Janet Stiven  
 Cherry Stoddard  
 Su Ki's Salon  
 Ms. Patti Taves  
 Ms. Marie L. Tenzinger  
 The Sentius Charitable Fund  
 John and Colleen Tovar  
 Mr. David Victor  
 Mr. and Mrs. John W. Vires  
 Kathryn Voland-Mann  
 Mr. Jeremy Vrtis  
 Ms. Deborah Walsh  
 Mr. Edward Warmowski  
 Ms. Nancy Webster  
 Western Springs Music Club  
 Ginger and Paul Wheeler  
 Ms. Olivia Schreiner and Mr.  
 Justin Witte  
 Jerry and Lin Zielinski  
 Mr. and Mrs. Thomas  
 Zimmermann

### Friend (\$50-\$249)

Anonymous (19)  
 A Toda Madre  
 Sue Adams  
 Peggy Aldworth  
 Nancy Allured  
 American Association of  
 University Women -  
 Lombard  
 American Association of  
 University Women  
 Tina Connelly and Dennis  
 Anderson  
 Andrew's Garden  
 Ms. Nancy Arango  
 Ms. Christine A. Aument  
 Avanzare Restaurant  
 Cynthia Baranowski  
 Darlene Barger  
 A. C. Barnicle  
 Bob and Joy Barrell  
 Ms. Constance Barreras  
 Amelia Barrett  
 Debbie Barrett and Barry  
 Zelinski  
 Ms. Pam Bartle  
 Ms. Betty Basista Ronaldson  
 Betty and Bob Becker  
 Ms. Beverly J. Bednarik  
 Biff Behr and Lynne Richman  
 Ms. Colleen Bell  
 Ms. Patricia Bell-Daniels  
 Marty and Betty Bender  
 Mr. and Mrs. Bradley  
 Bensenberg  
 Mr. Gregory Bewick  
 Mr. Leonard Bielefeldt  
 Mr. and Mrs. Chris Binnig

Mrs. Germaine Bird  
 Ms. Dianne Birdsall  
 Mr. and Mrs. Paul Bolbat  
 Mr. and Mrs. James Borus  
 Mr. and Mrs. Larry Boward  
 Susan Brassfield  
 Mr. Gerard Brosnan  
 Ms. Joanie Brosnan  
 Mr. George Bruce  
 Nickey Brummel  
 Dr. and Mrs. John E. Buntrock  
 Mr. and Mrs. Charles C. Burgis  
 Mildred and Harold Burrow  
 Mr. and Mrs. Robert Burrows  
 Mr. and Ms. Mark Bussey  
 C.B. Conlin Landscapes, Inc  
 Mr. and Mrs. Will Calderwood  
 Cantigny Golf Club  
 Ms. Virginia Cantu  
 Ms. Katherine Carmichael  
 Ms. Jennifer Carrillo  
 Jim Carsten  
 Mrs. Janet Casey  
 Mr. Joseph Cassidy  
 Mr. Bruce Caster  
 Ms. Lourdes S. Chew  
 Ms. Nancy Chlumsky  
 Ms. Diana Christopher  
 Mr. and Mrs. Mike Cittadino  
 Mr. and Mrs. Alan L. Clark  
 Ms. Michele Clemen  
 Judy Coates  
 Ms. Linda Coen  
 Ms. Gretchen Colavito  
 Mr. and Mrs. Jim Connolly  
 Peggy Connolly  
 Mr. and Mrs. Paul L. Conti  
 Ms. Patricia Conway  
 Ms. Erica Coppolino  
 Bill Curry and Gretchen  
 Fleming  
 Ms. Diane M. Curtis  
 CycleBar Wheaton  
 Lee Dabkey  
 Jeanne E. Davik  
 DC Body Bar  
 Marilyn and Gene Dicola  
 Ms. Katheryn Dillon  
 Ms. Rosalinda Dominguez  
 Mark and Kim Dorn  
 DoubleTree by Hilton Lisle  
 Naperville  
 Ms. Alice Douglas  
 Ms. Margaret Doyle  
 Alan and Carolyn Drake  
 Bruce and Kathy Dudzik  
 Jenny Dunbar  
 Ms. Anita Dykema  
 Daniel Edelman and Fran  
 Kravitz  
 Mr. and Mrs. Thomas B. Egan  
 Penelope Ellsworth

## FRIENDS OF THE MAC

William Epcke  
 Ms. Jennifer Evans  
 Miles Evans  
 Expedia  
 Ms. Ann Fink  
 Mr. and Mrs. Todd Fischer  
 Ms. Janice L. Fogle  
 Eric and Marilyn Fors  
 Ms. Judith D. Frazier  
 Ruta Freimanis  
 Jay French  
 William Fullriede  
 Fusion Hair Salon  
 Ms. Anne Gabriel  
 Jan Gahala  
 Ms. Jo Anne Ganziano  
 Mary Jane Garrett  
 Mr. Christopher A. Gekas  
 James and Nancy  
   Gianfrancisco  
 Bob and Carrie Gibson  
 Mr. and Mrs. Jeffrey Gibson  
 Mr. and Mrs. Daniel Glab  
 Glen Elyn Historical Society  
 Dr. Gloria Golec  
 Mr. Gerald W. Good  
 Ms. Anne Gould  
 Ms. Kathleen Graffam  
 Jack and Robin Graham and  
   the Graham Giving Fund  
   of Fidelity Charitable  
 Lenn Grayes  
 Ms. Aldona Green  
 Ms. Cathy Griffin  
 Ms. Wanda Gustas  
 Donna Guy  
 Ms. Laura Guzman  
 Kim Hahn  
 Mr. and Mrs. David Hall  
 Ms. Amy Hollowell  
 Ms. Karen Hanmer  
 Lubna and Faraz Haque  
 Ms. Leah Harding  
 Diana and Gary Harper  
 Mr. and Mrs. Thomas R.  
   Hattan  
 Ms. Jennifer Hayward  
 Mr. and Mrs. Edward M.  
   Hegarty  
 Paula and James Hellige  
 Ms. Ann B. Henderson  
 Mr. and Mrs. Rich Henderson  
 Mr. Lloyd Hendrickson  
 Susan S. Hennig  
 Ms. Susan Hervey  
 Sandra Hill  
 Ron Hilton  
 Allan G. Hins and Marilyn E.  
   Wilgocki  
 Ms. Heidi J. Holan  
 Ms. Rosa Lidia Huante  
 Illinois Tool Works  
 Ms. Pam Imbeau  
 Fatenah Issa  
 Mr. Charles Jakubowski  
 Ms. Joanne Jannsen  
 Ms. Adriana Janutka  
 Ms. Marilyn L. Jelinek  
 Ms. Jean M. Jeske  
 Edward and Susan Jeszka  
 Mary Ann Jirak  
 Mr. and Mrs. Tomas  
   Johansson  
 Tony and Julie Johnson  
 Mr. Brian K. Johnson  
 Mr. Timothy Johnson  
 Jolie Charcuterie  
 Ms. Felicia S. Kaplan  
 Tom and Kay Kelly  
 Ms. Violet Kerbbel  
 Mr. Dylan Kim  
 Mr. Randolph King  
 Ms. Bernadette Kniebusch  
 Ms. Carole Kohout  
 Elaine and Roger Kolman  
 Ulrike Konchan  
 Ms. Anne Kopke  
 Ms. Lori Kramer  
 Ms. Shelley Krause  
 Ms. Serena Krush  
 Ms. Claire Krzyzewski  
 Mr. and Mrs. Thomas J. Kuhn  
 Linda Kulikowski  
 Mr. John Kunkes  
 L.L. Bean  
 Mr. John L. Ladle, Jr.  
 Ms. Kathryn S. Lahey  
 Mr. and Mrs. William Laing  
 Eileen B. Landau, Fidelity  
   Charitable Trust, in  
   Memory of Eliot A. Landau  
   and Cateria A. Pryde  
 Ms. Lea Lazarus  
 Ms. Cheryl LeeVan  
 Mr. and Mrs. John Liedtke  
 Travis Linderman  
 Ms. Andrea Lindgren  
 Ms. Harriett Lindstrom  
 Ms. Donna J. Luce  
 Mark and Kathleen Lundberg  
 Liz Luszczek  
 Ms. Anne Lysaught  
 Maestro Artist Management  
 Leal Maloney  
 Madeleine and Ralph Marbach  
 Diane Maurer  
 Ms. Christine Maxwell  
 Jeffrey May  
 Ms. Elaine McCluskey  
 Mrs. Dorothy McCormack  
 Ms. Kathleen McCullough  
 Ann McDonald  
 Mr. and Mrs. David M.  
   McGowan  
 Mr. and Mrs. James McGuire  
 Mary and Ray McMahon  
 Ms. Susana Melgoza  
 Meson Sabika  
 Michael and Sandra Meyers  
 Mrs. Wayne J. Micek  
 Mr. and Mrs. Francis Mies  
 Mr. and Mrs. Craig Miller  
 Ms. Kendra Miller  
 Ms. Liz Minogue  
 Ms. Cheryl R. Moen  
 Daniel and Marilyn  
   Montgomery  
 Bud and Pat Motz  
 Mr. and Mrs. Don Motz  
 Ms. Lois Mouhelis  
 Ms. Phyllis A. Mueller  
 Terry Mueller  
 Ernest and JoAnne Nassos  
 National Museum of Mexican  
   Art  
 Michael and Judith Nigro  
 James and Joan Nocera  
 Mr. John L. Norton  
 Ruth Oberg  
 Ms. Tonya Ohern  
 Gwen O'Loughlin  
 Ms. Judith W. Olson  
 Ms. Natalie Owen  
 Alice E. Packard  
 Greg and Sue Pawlowicz  
 Ms. Kimberly Peckenpaugh  
 Ms. Ruth Peterman  
 Ms. Erin Peterson  
 Rohan and Merlyn Phillips  
 Mr. and Mrs. Edward Pillar  
 Pinecones & Stitches  
 Lisa Pint  
 Roger and Sarah Poeppel  
 Ms. Cassandra J. Ponstein  
 Quintin Porter  
 Mrs. Karen Poulos  
 Ms. Lynda Pratscher  
 Roger and Vivian Pscherer  
 John and Mandy Rakow  
 Ms. Mari Kaye Rath  
 Mr. William C. Raymond  
 Ms. Tracey J. Reid  
 Reserve 22 Restaurant at  
   Village Links  
 Mr. Leslie Robbins  
 Marlene and Bob Rosecrans  
 Ms. Patricia M. Rotondi  
 Mr. and Mrs. Gus A.  
   Rousonelos  
 Nancy L. Ruby  
 Mr. and Mrs. Larry Rynning  
 Sandra Sansone Brennan  
 Alfred Savino  
 Mr. Russ Scanio  
 Ms. Carleen L. Schreder  
 Mr. Carl Schref

## FRIENDS OF THE MAC

Ms. Jane E. Schubert  
 Richard and Patricia  
 Schwarze  
 Gerry Sczygiel  
 Ms. Sherie Shapiro  
 Ms. Vicki L. Shargo  
 Awad and Rhoda Sifri  
 Ms. Susan Simek  
 Mike Sitrick  
 Mrs. Helen W. Sladek  
 Ms. Peggy Slepian  
 Mr. and Mrs. Stephen Smith  
 Ms. Rosemary Snow  
 Ms. Faria Sepahrokh  
 Ms. Barbara Soris  
 Ms. Patricia B. Spence  
 Mr. and Mrs. Hugh Spencer  
 Mrs. Sherry Spengel  
 Ms. Catherine Sreckovich  
 Lynn St Germain  
 Ms. Eliza Stern  
 Dr. and Mrs. Conrad Stoll  
 Ms. Cheryl Stoneking  
 Mr. and Mrs. John Stotts  
 Melissa Striedl  
 Norma C. Stroner  
 Ms. Angela Stroud  
 Mr. and Mrs. Thomas J.  
 Suhrbur  
 Ms. Melissa Sullivan  
 Dr. Nancy Svoboda  
 Grace and Len Swanson  
 Katherine Swihart  
 Dr. Diane R. Szakonyi  
 Kasia Szczesniowski  
 Tom and Jan Szot  
 Ms. Helen B. Szymanski  
 Ms. Kathleen Talenco  
 Ms. Macarena Tamayo-  
 Calabrese  
 Ms. Laverne Tedeski  
 Ms. Donna Templeton  
 Mr. John Teschky  
 Virginia and Jerry Thompson  
 Paul Thompson  
 Treasure House Resale Shop  
 Trinity Irish Dancers  
 Colleen and Paul Trinko  
 Ms. Robin S. Tryloff  
 Mr. Thomas Turigliatto  
 Ms. Nancy H. Turner  
 Ms. Carol Upshaw

Patricia and Anthony Vahcic  
 Ms. Lisa Vargas  
 Ms. Francine Venegas  
 Ms. Deborah L. Venezia  
 Mr. and Mrs. Michael Volk  
 Ms. Helen Vopenka  
 Ms. Patricia Vopenka  
 Judith Wagner  
 Penelope Wainwright  
 Ms. Cathleen Wallin  
 Larry Ward  
 Judy Webster  
 Ms. Mary Lou Wehrl  
 Patricia and Richard Weichle  
 Robert and Marlene Weiler  
 Anne and Jim Wengerd  
 John and Bobbi Wheatley  
 Whiskey Acres  
 Robert and Jeanne Whisler  
 Ms. Mary Wiesen  
 Lenore Wilcox  
 Mr. Tod D. Willman  
 Ms. Paula Willuweit Pycirk  
 Joseph and Laura Wilmarth  
 Tyna  
 Ms. Jolene Wise  
 Ms. Ying L. Wong  
 Mr. John Wright  
 Ms. Janice Yohanan  
 Diane Meiborg and Roger  
 Zacek  
 Ms. Sabrina N. Zeidler  
 Mr. Richard Zuckerman

### Corporate and Community Sponsors

21c. Museum Hotel  
 A Toda Madre  
 A. Traub & Associates  
 Adelle's Fine American Fare  
 Aero Mexico/Delta  
 AIG Retirement Services  
 American International Group  
 Arts Midwest  
 Bank of America  
 Ball Horticultural Company  
 Bat 17 Lombard  
 Brookdale Glen Ellyn  
 Christopher B. Burke  
 Engineering  
 Clayco

College of DuPage  
 Foundation  
 Crowne Plaza Hotel  
 DoubleTree by Hilton Lisle  
 Naperville  
 DuPage Convention and  
 Visitors Bureau  
 DuPage Foundation  
 Ecolab  
 El Famous Burrito  
 Enjoy Illinois/Department of  
 Commerce and Economic  
 Opportunity  
 Extract Juicery  
 Follett  
 G. Carl Ball Family Foundation  
 Glen Prairie  
 Goya Foods  
 Illinois Arts Council Agency  
 JCS Fund of the DuPage  
 Foundation  
 La Tequileria, Inc.  
 Legat Architects  
 Naperville Convention and  
 Visitors Bureau  
 National Endowment for the  
 Arts  
 Nicor Gas  
 Nobel House  
 Nothing Bundt Cakes  
 Reserve 22  
 Rotary Club of Bloomingdale-  
 Roselle  
 Rotary Club of Carol Stream  
 Rotary Club of Glen Ellyn  
 Rotary International District  
 6440  
 Rotary International District  
 6450  
 Santa Fe Restaurant  
 Small Business  
 Administration-Shuttered  
 Venue Operators Grant  
 STG Divorce Law  
 90.9FM WDCB  
 West Suburban Art Society  
 302 Wheaton  
 Wheaton A.M. Rotary Club  
 Wight and Company  
 WXRT

\* includes Seaton Society

## HOUSE NOTES

- Cameras and recording devices are not allowed in the theater and are prohibited by our contracts with the artists.
- Smoking is not permitted in the theater or on campus.
- For your comfort and security, all backpacks and large bags must be checked.
- Please turn off all cell phones and any other alarms while in the theater.
- Emergency phone number at College of DuPage Police Department for after-hour calls is (630) 942-2000.
- Latecomers seated at discretion of the House Manager.
- Groups of 10 or more may contact (630) 942-3026 or groupptix@cod.edu to arrange for group discounts.
- If you notice a spill in the theater, please notify an usher.
- McAninch Arts Center volunteers are people who assist the house staff in areas of ticket taking, ushering and general management during performances. To get involved, call (630) 942-3705.
- **For Americans With Disabilities Act** accommodations, call (630) 942-2141 (voice) or (630) 858-9692 (TDD).
- **Infrared Assistive Listening Devices:** For audience members who desire audio amplification of performances, headsets with individual volume controls are now available. You may check out the headsets at the Box Office with a driver's license. *Underwritten by a generous gift from The Knowles Foundation.*

## MAC STAFF LISTING

### MAC Administrative Staff

Director of the McAninch Arts Center .....	Diana Martinez
Business Manager .....	Ellen McGowan
Assistant Business Managers .....	Molly Junokas, Kari Schoettle
Curator, Cleve Carney Museum of Art .....	Justin Witte
Assistant Curator .....	Julia Walker
Gallery Assistant .....	Maria VanDyken Li
Marketing and Patrons Services Coordinator .....	Janey Sarther
Education and Engagement Coordinator .....	Dawn Smith
Director of Development for Cultural Arts .....	Janie Oldfield
Graphic Design and Group Sales Coordinator .....	Kat Donaldson
Administrative Assistant .....	Mandy Rakow
Student Clerical Assistant .....	Annie Wagner

### MAC Box Office and Front of House Staff

Box Office Manager .....	Julie Elges
Assistant Box Office Supervisors .....	Jim Gosling, Elise Wash
Box Office Assistants .....	Patrick Garon, Tatia Hegrans
Patron Services Manager .....	Tom Murray
Assistant Patron Services Supervisor .....	Deborah Kolek
Front of House Manager .....	Rob Nardini

### MAC Resident Professional Ensembles

Buffalo Theatre Ensemble, Artistic Director .....	Connie Canaday Howard
Buffalo Theatre Ensemble, Associate Artistic Director .....	Amelia Barrett
Buffalo Theatre Ensemble, Business Manager .....	Bryan Burke
New Philharmonic, Music Director and Conductor .....	Kirk Muspratt
New Philharmonic, Associate Conductor and Librarian .....	Benjamin Nadel
New Philharmonic General Manager .....	Paula Cebula
New Philharmonic Personnel Manager .....	Karen Dickelman

### MAC Design and Technical Staff

Technical Production Coordinator .....	Richard Arnold, Jr.
Technical Theater Assistant Coordinator .....	Sabrina Zeidler
Costume and Make-up Design Coordinator .....	Kimberly G. Morris
Assistant Costume Coordinator and Stitcher .....	Gretchen Woodley
Production Manager .....	Joe Hopper
Sound and Lighting Specialist .....	Ben Johnson
Lighting Production Specialist .....	Elias Morales
Audio Production Specialist .....	Fisher Parsons
Events Production Specialist .....	David Makuch
Stage Hands .....	Bobby Bryan, Zak Zubka

# BROOKDALE

*Whatever we can do to help,  
we'll do it with care.*

At Brookdale, your loved one is a member of our family. You'll find our care is delivered with knowledge gained from serving families for generations. Join our community to discover how you or your family member will feel right at home.



**BROOKDALE**  
— SENIOR LIVING SOLUTIONS —

[brookdale.com](http://brookdale.com)

For more information, contact (630) 446-1506  
or [mmetzger1@brookdale.com](mailto:mmetzger1@brookdale.com).

**Brookdale Glen Ellyn (formerly The Meadows)**  
Independent Living  
Assisted Living  
60 North Nicoll Ave | Glen Ellyn, IL 60137  
(630) 446-1600

02001

